



# Mid Missouri Chapter

## A REPORT TO OUR MEMBERS

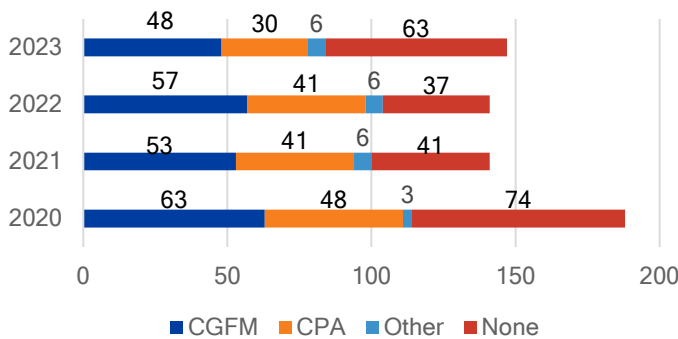


The Mid-Missouri Chapter was founded on July 11, 1973, by John Ashcroft. Our Chapter was the 42<sup>nd</sup> of 92 Chapter charters, with the first charter done in 1950. The Chapter’s mission is to advance accountability, transparency, and leadership by promoting education, certification, innovation, and collaboration across all levels of government and to stakeholders.

The board has worked hard to recruit new leadership. As the Chapter looks to the future, it needs fresh ideas and perspectives to keep the Chapter relevant. The Chapter continues to struggle with membership retention and event attendance. The main employer of Chapter members is undergoing a major digital transformation which impacted attendance. New leaders have brought fresh ideas to the table that are being incorporated into our new normal.

### Our Membership

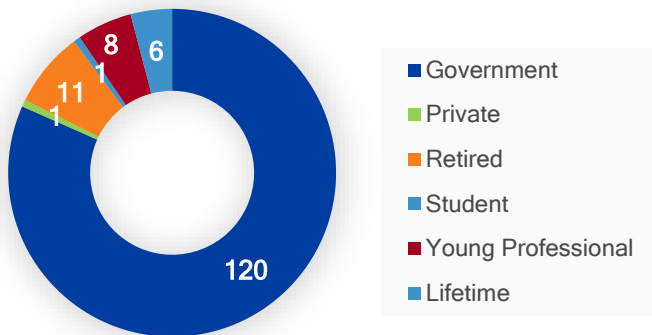
CGFM and Other Licenses



### 2023 Chapter Officers

President	Jamie Pine
President-Elect	Aaron Libbert
Immediate Past-President	Danielle Weed
Secretary	Sara Hagenhoff
Treasurer	Tracy Farris
Education Director	Mark Runyan
Communication	Vandee DeVore
Membership	Rachel Hogrefe
Certification	Bob Snyder
Community Service	Melody Freeman

### Membership Types



### Contact Us

Email [info@midmoaga.org](mailto:info@midmoaga.org)  
 Website [midmoaga.org](http://midmoaga.org)

 [@Mid-Missouri AGA Chapter](https://www.facebook.com/Mid-Missouri-AGA-Chapter)

 [@Mid-MO AGA Chapter](https://www.linkedin.com/company/Mid-MO-AGA-Chapter)

### Awards and Community Service

The Chapter achieved a Gold Award for Achievements in Chapter Excellence (ACE) for Chapter Operations.

Our Citizen Centric Report (CCR), our annual report for 2021-2022, also received the Citizen-Centric Reporting Recognition of Excellence.

The Chapter also awarded Scholarships to Lindi Moulin and Rhett Robinson. Congratulations!

Pictured: Member Deanna Boland, Membership Director Rachel Hogrefe, and some of Rachel's family. Members raised funds for the local Salvation Army by ringing bells, and sometimes sang carols.

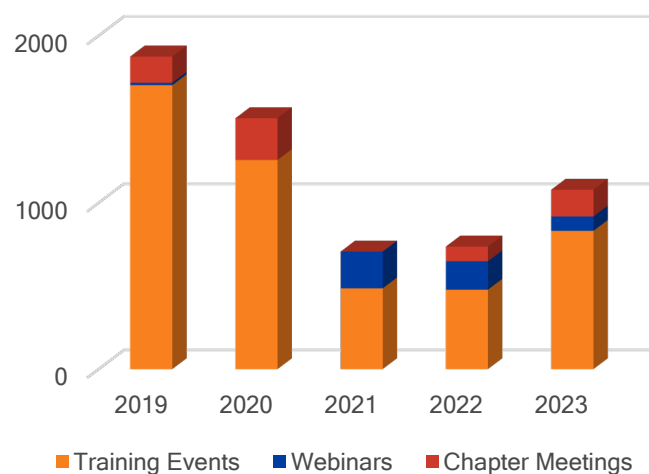


### Performance Measures

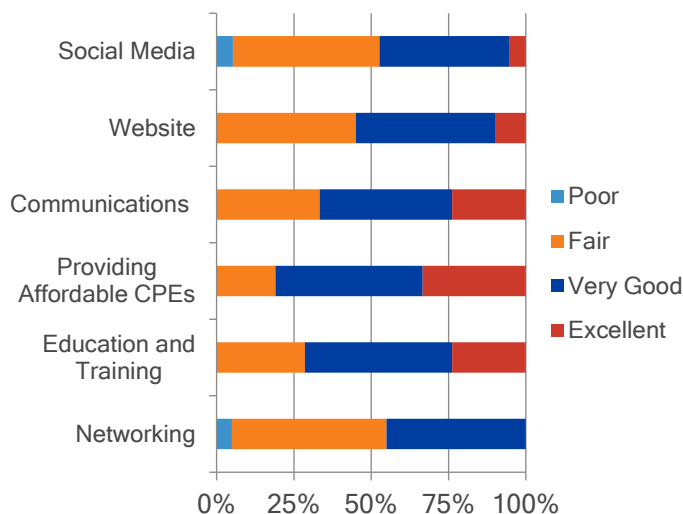


Program Year:	2023	2022	2021
New Members	13	23	15
Change in Number of Chapter CGFMs	(9)	4	(10)
CPE Credits Sponsored	40	40	28
Student Scholarships Awarded	2	2	2
Average Monthly Meeting/Webinar Attendance	9	12	14
Average Training Event Attendance	52	30	36

### Continuing Education Credits Provided



### Membership Survey Results



# Chapter Finances

Revenue, Expenditures and a Budget Comparison (In Dollars)

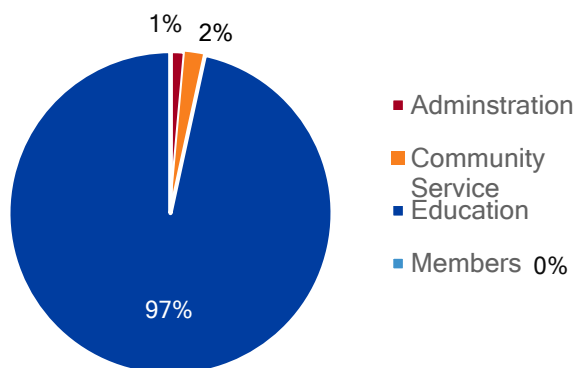
## Revenue

	2020	2021	2022	2023
Admin	\$ 9,540	\$ 5	\$ 710	\$ 295
Community Service	\$ 580	220	\$ 269	\$ 414
Education	\$22,415	\$12,054	\$11,578	\$20,025
Members	\$ 0	\$ 0	\$ 0	\$ 0
<b>Total</b>	<b>\$32,535</b>	<b>\$12,279</b>	<b>\$12,557</b>	<b>\$20,734</b>

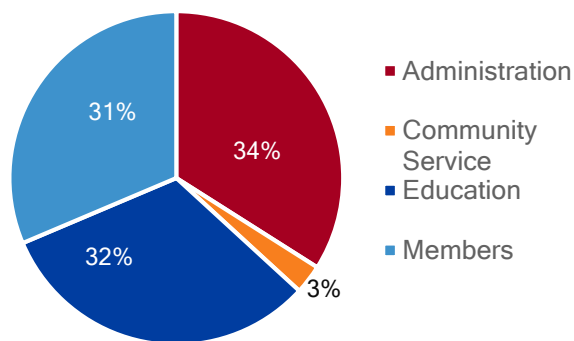
## Expenditures

	2020	2021	2022	2023
Admin	\$ 5,048	\$ 4,007	\$ 3,113	\$ 6,137
Community Service	\$ 630	\$ 220	\$ 369	\$ 510
Education	\$10,985	\$ 3,147	\$ 5,568	\$ 5,743
Members	\$ 4,960	\$ 4,404	\$ 3,876	\$ 5,665
<b>Total</b>	<b>\$21,623</b>	<b>\$11,828</b>	<b>\$12,926</b>	<b>\$18,055</b>

2023 Revenue



2023 Expenditures



### Revenue and Expenditures Notes

Program Year 2023 revenue and expenditures have almost returned to pre-COVID levels. While we continue to offer 40 annual CPE, it is now based on a combination of both virtual and in-person sessions. We were able to resume our two-day training event this year resulting in the increased 2023 Educational revenue. Program Year 2020 revenues for the Admin category are significantly higher resulting from a withdrawal from the Chapter CD to cover fixed costs for website and email hosting services until chapter event attendance was anticipated to re-bound. Upgrading our website and moving to an annual website service fee, for a discount, caused the spike in the 2023 Admin expenditures, which are expected to return to normal in 2024.

### Independent Review

The Mid-Missouri Chapter strives to have an independent review of the Chapter's Finances by volunteer members. At the time of this publication, the review for 2022-2023 has been scheduled but not yet completed. The Mid-Missouri Chapter has internal control procedures in place to safeguard funds and provide efficient and effective management of assets. The financial statements presented were reconciled and the complete financial reports can be found at [https://midmoaga.org/Financial\\_Reports](https://midmoaga.org/Financial_Reports).

## Challenges and Future Plans

**Communications:** The Chapter is working to expand our use of social media and quarterly newsletters. Communications over the past few years have struggled with commitment and consistency. We are working to rebuild our members' trust in our messaging. We continue to post the financial reports and meeting minutes on our website for your review.

**Education:** The Chapter worked hard last year on providing high quality training events and will continue to do so this year. One challenge to increasing our meeting attendance is the largest employer of our members is undergoing a statewide digital transformation of the budget, financial, procurement, payroll, and human resources systems. This project is pulling our members into significant hours of meetings which is negatively impacting their availability to attend our trainings. We are working to find quality topics and speakers at the lowest cost to maximize profit in light of uncertain attendance levels.

**Professional Certification:** The Chapter is working with other regional chapters to promote a virtual study group.

**Administration:** The Chapter had significant success last year in reducing administrative expenses. This year, the Board is working on revamping several other programs such as replacing an outdated member of the year program to a more inclusive membership participation program. We are also working to modernize our scholarship program.

**Membership:** The Chapter continues to see a declining membership due to large levels of retirement and little to no retention of new members. The State's LinkedIn Learning training platform continues to impact the desire for membership in professional organizations. Therefore, the Chapter is trying

### 2024 Board

Chapter President

Aaron Libbert

[president@midmoaga.org](mailto:president@midmoaga.org)

Chapter President-Elect

Whitney Pickerell

[president@midmoaga.org](mailto:president@midmoaga.org)

Past President

Jamie Pine

[pastpresident@midmoaga.org](mailto:pastpresident@midmoaga.org)

Communication

Vandee DeVore

[communications@midmoaga.org](mailto:communications@midmoaga.org)

Professional Certification

Lewis "Bob" Snyder, CGFM

[cgfm@midmoaga.org](mailto:cgfm@midmoaga.org)

Treasurer, Accountability Chair

Tracy Farris

[treasurer@midmoaga.org](mailto:treasurer@midmoaga.org)

Education

Mark Runyan

[education@midmoaga.org](mailto:education@midmoaga.org)

Membership

Rachel Hogrefe

[membership@midmoaga.org](mailto:membership@midmoaga.org)

Secretary

Sara Hagenhoff, CGFM

[secretary@midmoaga.org](mailto:secretary@midmoaga.org)

Community Service

Rachel Hogrefe

[communityservice@midmoaga.org](mailto:communityservice@midmoaga.org)

to diversify our training topics to garner interest from new members and professions.

Please let us know if you would like our Chapter to help prepare a Citizen Centric report for your organization. We are also interested in any feedback on our report. Please contact us at [info@midmoaga.org](mailto:info@midmoaga.org) or find us on our website at <https://midmoaga.org>.